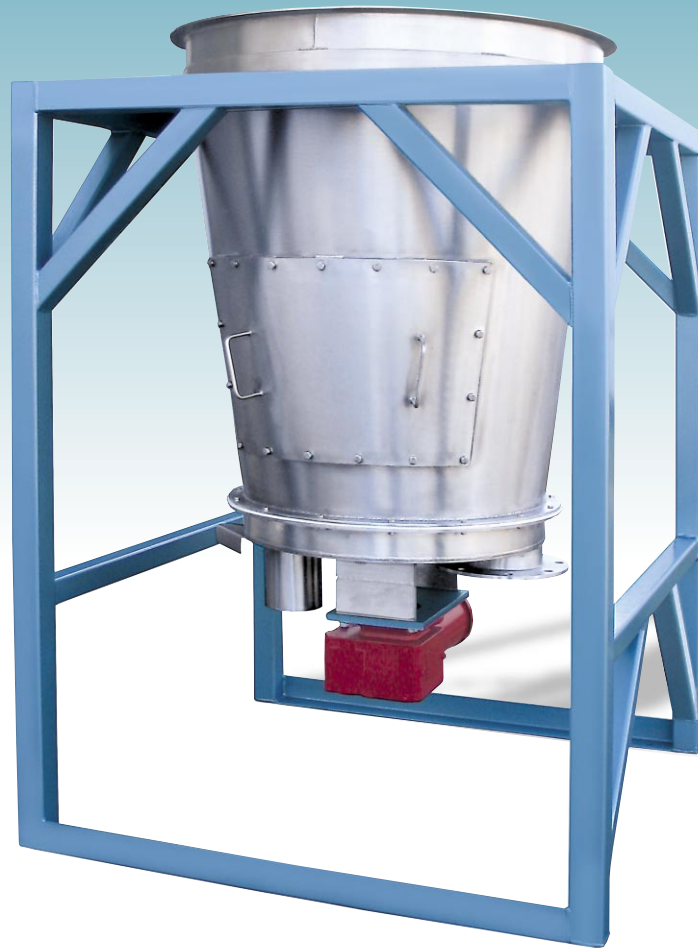


Acrison®

“Flat Bottom” **BIN DISCHARGER**

Model 170-BD-30

For Dry Solid Materials



*Advanced design technologies for superior
performance, quality and reliability.*

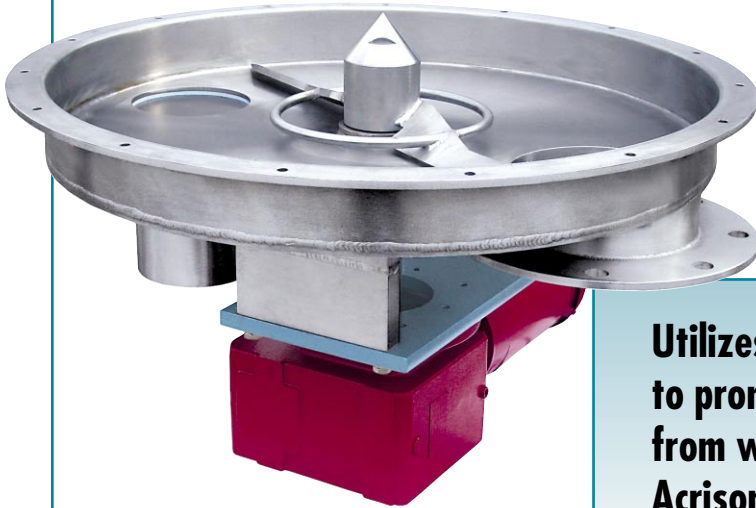
Built to Last

Acrison®
Acrison®
Acrison®

“Flat Bottom” BIN DISCHARGER Model 170-BD-30

For Dry Solid Materials

**Self-emptying
with total
clean-out capability**



Model 170-BD-30 Bin Discharger

Utilizes mechanically induced internal agitation to promote the discharge of dry solid ingredients from within a bin (or hopper), typically for filling Acrison Feeders.

Operation

The Model 170-BD-30 Bin Discharger consists of a circular, non-converging flat bottom housing containing a horizontally mounted agitator (driven from beneath) for effectively and reliably discharging dry solid materials from within a storage bin (hopper) to which it attaches.

Product flows out of the storage bin and into the mating wide throat opening of the Model 170-BD-30 where the sweeping action of the slowly rotating agitator, across the Discharger's flat bottom, produces positive product discharge without compaction, attrition and/or segregation. Also, since all internal areas of the Bin Discharger are active, dead zones do not exist and thus, product stagnation cannot occur anywhere within the unit.

The Model 170-BD-30 Bin Discharger is equipped with two individual outlets, one of which is typically utilized for filling an Acrison Feeder, or to refill an Acrison “Weight-Loss” Weigh Feeder. (*When refilling a “weight-loss” feeder, the discharge outlet typically includes an automatically operated slide gate type valve.*)

The second outlet is a novel “Discharge Port” that allows the contents of the Bin Discharger, and its associated storage bin, to be emptied rapidly, ideally suited for frequent product changeovers. The “Discharge Port” is normally furnished with a manually operated slide gate valve, although it can also be equipped with an automatically operated valve. And because the Bin Discharger itself is self-emptying, total cleanout is quick and easy.



Model 170-BD-30 Bin Discharger
with storage bin

Model 170-BD-30 Bin Discharger

The Model 170-BD-30 is designed with a heavy-duty inlet mounting flange for direct (bolted) attachment to a mating outlet flange on a storage bin, eliminating the need for flexible connections. The inside diameter of its mounting flange is 30 inches. The mating bin (hopper), as supplied by Acrison, will be designed for reliable gravity (mass) flow into the Bin Discharger.

Standard available integral storage bins (hoppers) for use with the Model 170-BD-30 Bin Discharger typically range in capacity from 20 to 100 cubic feet as a factory-assembled package (larger sizes may be available). The actual hopper size is contingent upon application parameters and product handling characteristics. When complete clean-out is a requirement, the mating storage bin can be furnished with an appropriately sized access door.

Standard material of construction for all product contact surfaces is 304 stainless steel, although other materials of construction are available, as are specialty internal coatings and finishes to suit the specifics of a given application/product.

The agitator of the Model 170-BD-30 is driven by a constant speed, heavy-duty gearmotor drive.



**Model 170-BD-30 Bin Discharger
with storage bin and an automatically
operated discharge valve**



**Model 170-BD-30 Bin Discharger with storage bin and
an automatically operated discharge valve for refilling
a "Weight-Loss" Weigh Feeder**

Discover the difference!

We cordially invite you to witness a test in Acrison's state-of-the-art Customer Demonstration Facilities handling your actual product(s) with the specific equipment we recommend for the application. Usually, there is no cost or obligation for this service. Discover the difference in technology, quality and performance of Acrison equipment.



Acrison products...

- Models 101 and 130 Volumetric Feeders
- Models V101 and V130 Volumetric Feeders
- Model 1015 Volumetric Feeder Series
- Model 105 Volumetric Feeder Series
- Model W105 Volumetric Feeder Series
- Model 120 Volumetric Feeder
- Model 140 Volumetric Feeder Series
- Model 170 Volumetric Feeder Series
- Bin Discharger Feeders
- Model 200 Series of Weigh Belt Feeders
- Model 203B Series of Weigh Auger Feeders
- Model 270 Series of In-Line Weigh Feeders
- Models 402, 404, A405, 406 and 407 Series ("Weight-Loss-Differential") Weigh Feeders
- Model Series 403 ("Weight-Loss-Differential") Weigh Feeders
- Model 403B(D) Batch/Dump Weighing Systems
- Model 404BZ(BU) Bulk Bag Unloader Batch Weigher
- Models 350 and 301 Continuous Blenders and Blending Systems
- Multiple Auger Bin Dischargers and Multiple Auger Bin Discharger Hoppering Systems
- Vibratory and Flat Bottom Bin Dischargers
- Model 500 Series of Polyelectrolyte Preparation Systems
- Water and Waste Water Treatment Systems
- Volumetric and Gravimetric Feeder Controllers and Control Systems
- Accessory Equipment for Acrison Products
- Systems Engineering

"Visibly Different... Measurably Better"

Acrison®

20 Empire Blvd.
Moonachie, NJ 07074 USA
201-440-8300 • Fax: 201-440-4939
Email: informail@acrison.com
Website: www.acrison.com



Empire Boulevard Facility
Moonachie, NJ USA



Trafford Park Facility
Manchester, UK



Joseph Street Facility
Moonachie, NJ USA

acrison, INC.

Copyright 2006—Acrison, Inc.—all rights reserved.
Acrison is a Registered Trademark of Acrison, Inc., Moonachie, New Jersey
© Registered Acrison Trademarks
Domestic and Foreign Patents issued and pending.