

Acrison®

Volumetric Feeders Model 1015 Series

For Dry Solid Materials



A versatile, rugged-duty Series of Volumetric Feeders designed with a contoured feed chamber housing a 'Conditioning Auger/Agitator' mounted above a smaller 'Metering Auger' (operating at dissimilar speeds) for accurately and reliably metering a wide variety of dry solids, and to self-empty.

Volumetric Feeders

Model 1015 Series

For Dry Solids

Model 1015 Feeders feature a contoured feed chamber in which a large Conditioning Auger/Agitator is mounted above a smaller Metering Auger (*operating at speeds dissimilar to each other*) for effectively and efficiently metering a broad assortment of dry solids, and to self-empty.

Operation

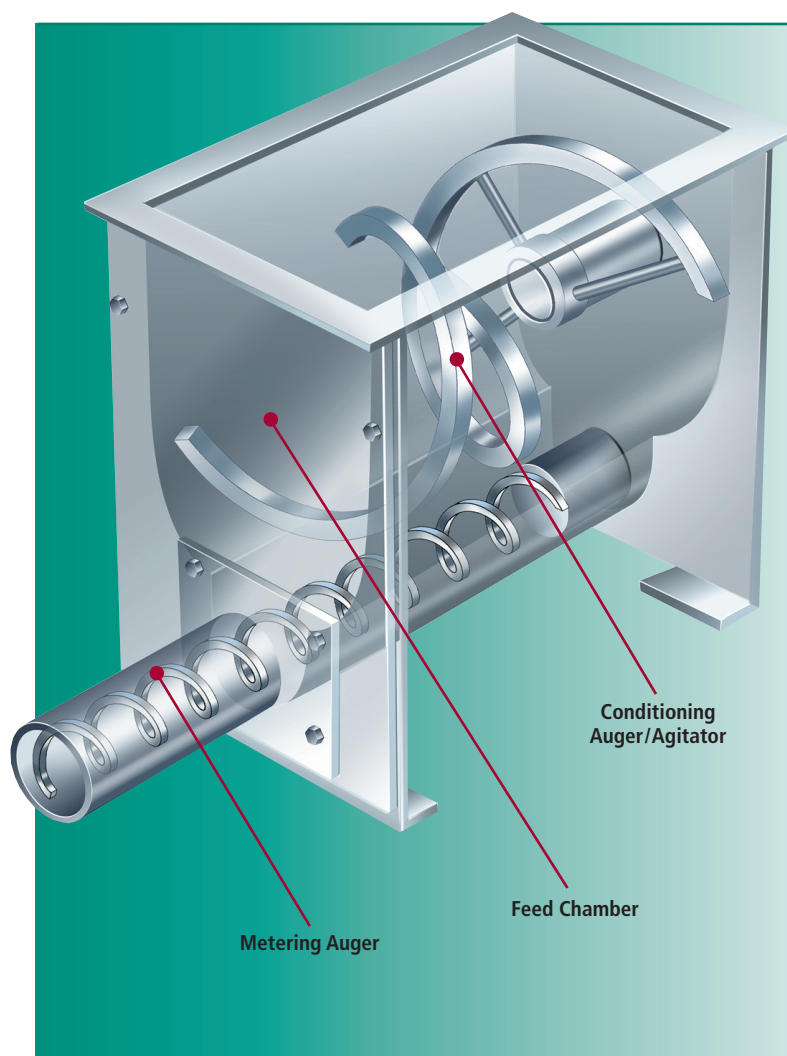
Designed either as an agitator or auger, rotation of the Conditioning Auger/Agitator produces bi-directional movement of product within the upper part of the feed chamber that very effectively 'fills' the Metering Auger beneath with material of uniform consistency. The action of the Conditioning Auger/Agitator also assists material flow out of the feeder's integral supply hopper.

The Conditioning Auger/Agitator and Metering Auger rotate at dissimilar speeds, with the Metering Auger operating at a much slower speed. Stagnant areas are eliminated by the design of the feed chamber in conjunction with the rotation of the Conditioning Auger/Agitator, which continuously circulates product. When the feeder is permitted to feed until empty, only a minimal amount of material will remain within the feed chamber.

For the Models 1015, 1015X and 1015Z, the Conditioning Auger/Agitator is mechanically geared together with the metering auger in a common drive network, powered by a single variable speed gearmotor.

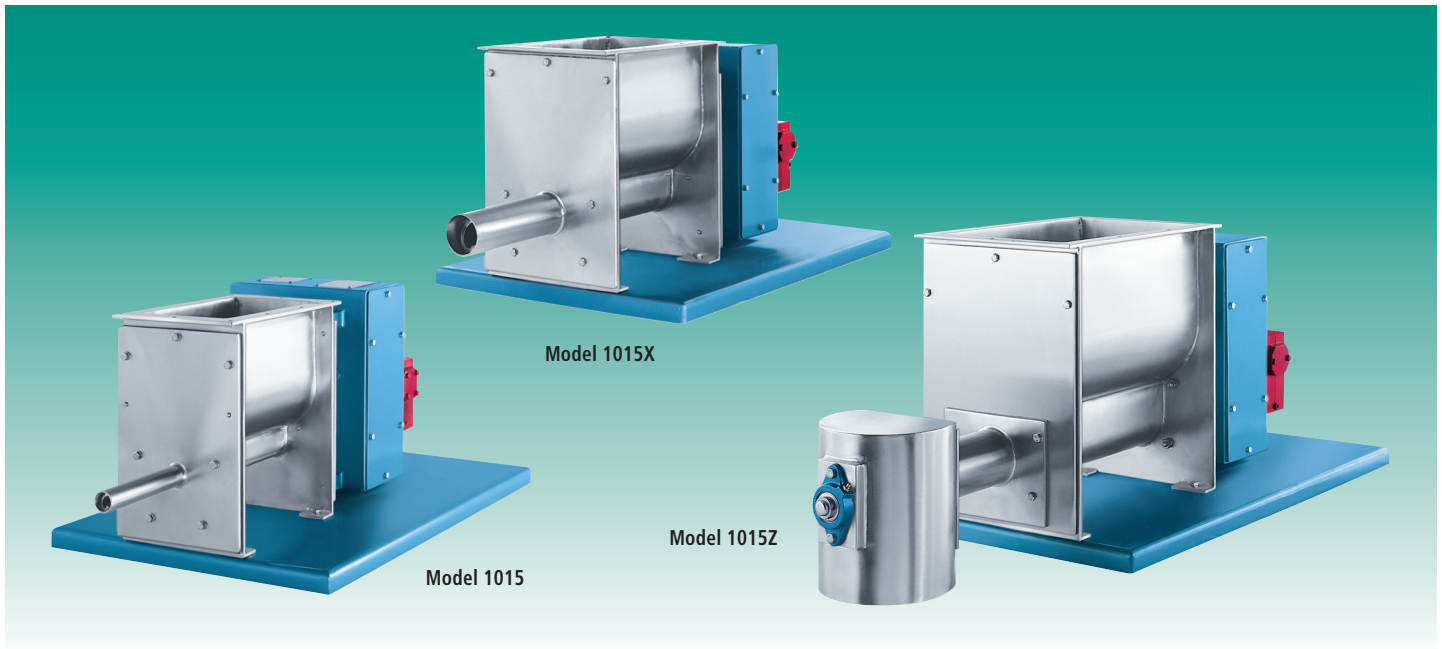
For the Models 1015XX and 1015YY, the Conditioning Auger/Agitator is normally driven by a constant speed gearmotor, and the metering auger by a separate variable speed gearmotor. However, based on product handling characteristics and/or application parameters, the Conditioning Auger/Agitator may also be driven by a variable speed gearmotor operating proportionally to the speed of the Metering Auger.

Volumetric metering accuracies generally range between ± 1 to 2 percent or better (error) for the majority of products. Accuracy is based on a given number of consecutive one minute samples.



A very effective Dry Solids Metering Concept for use in those applications where a minimal amount of residual product is desired.

Models 1015, 1015X and 1015Z Volumetric Feeders



Model 1015

Utilizes a 6 inch diameter 'Conditioning Auger/Agitator'. The feeder is powered by a 1/2 horsepower variable speed gearmotor.

Model 1015X

Utilizes an 8 inch diameter 'Conditioning Auger/Agitator'. The feeder is powered by a 3/4 horsepower variable speed gearmotor.

Model 1015Z

Utilizes a 10 inch diameter 'Conditioning Auger/Agitator'. The feeder is powered by a 1 horsepower variable speed gearmotor.

Standard Features

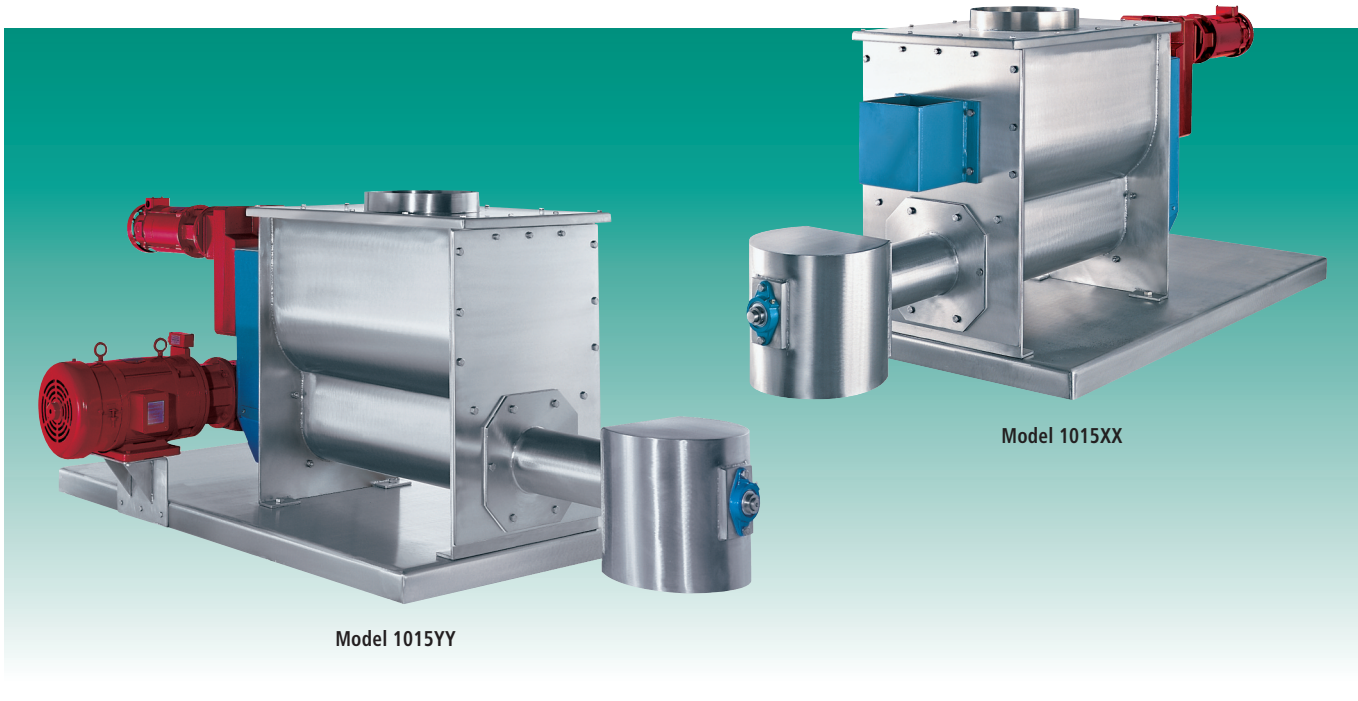
Models 1015, 1015X and 1015Z Volumetric Feeders

- All contact parts are 304 stainless steel.
- Furnished with a one cubic foot supply hopper, flanged feed chamber, or a flanged feed chamber with a cover having a circular inlet.
 - Maximum circular cover inlet sizes (OD) are as follows:

1015	6 inches
1015X	8 inches
1015Z	10 inches
 - Flanged rectangular feed chamber inlet sizes (inside dimensions) are as follows:

1015	6 ¹ / ₂ " x 11 ¹ / ₂ "
1015X	8 ¹ / ₂ " x 13 ¹ / ₂ "
1015Z	10 ¹ / ₂ " x 17 ³ / ₈ "
- The two drive shafts and seal components are 304 stainless steel.
- The Metering Auger is 316 stainless steel.
- The Conditioning Auger/Agitator is flange-attached to its drive shaft. The Metering Auger utilizes a threaded attachment to its drive shaft.
- Powered by a variable speed AC or DC gearmotor with a 10:1, 20:1, 30:1 or 50:1 speed range.
- Motors are totally enclosed.
- Dust-tight, heavy-duty construction.
- Silent when operating.

Models 1015XX and 1015YY Volumetric Feeders



Model 1015XX

Utilizes a 15 inch diameter 'Conditioning Auger/Agitator', typically driven by a constant speed, 3/4 horsepower gearmotor. The Metering Auger is powered by a 2 horsepower variable speed AC or DC gearmotor. Depending upon the application, the Auger/Agitator may also be driven by a variable speed AC or DC gearmotor, operating in proportion to the speed of the Metering Auger.

Model 1015YY

Utilizes an 18 inch diameter 'Conditioning Auger/Agitator', typically driven by a constant speed, 1 horsepower gearmotor. The Metering Auger is powered by a 3 horsepower variable speed AC or DC gearmotor. Depending upon the application, the Auger/Agitator may also be driven by a variable speed AC or DC gearmotor, operating in proportion to the speed of the Metering Auger.

Standard Features

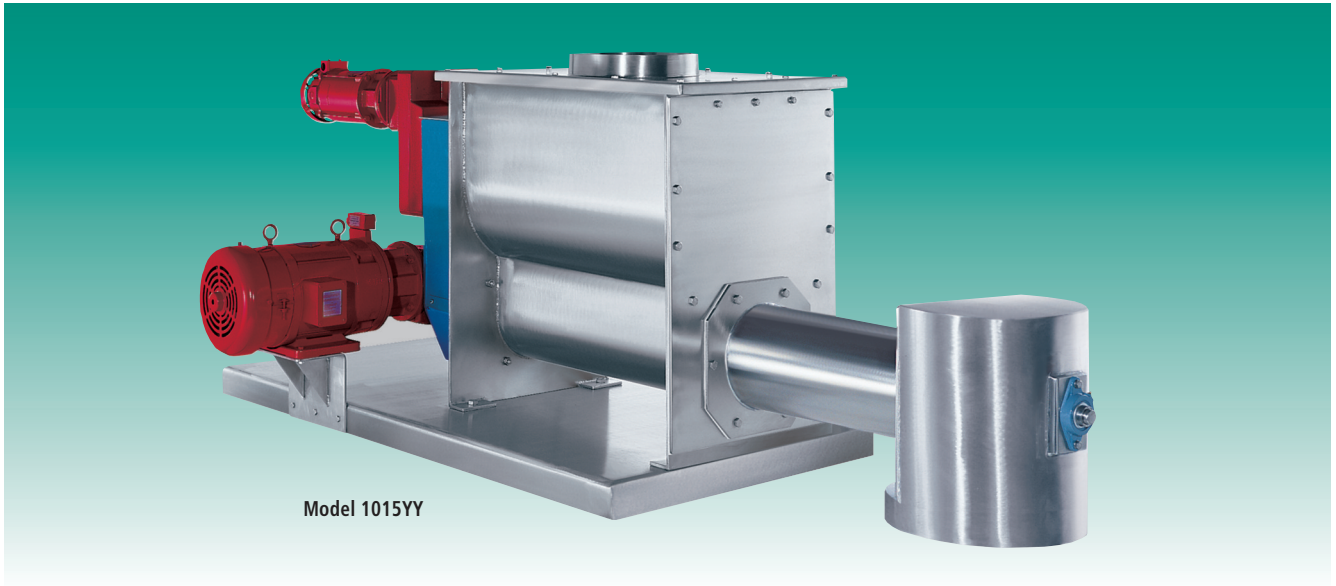
Models 1015XX and 1015YY Volumetric Feeders

- All contact parts are 304 stainless steel.
- Furnished with either a flanged feed chamber or a flanged feed chamber with a cover having a circular inlet.
 - Maximum circular cover inlet sizes (OD) are as follows:

1015XX	16 inches
1015YY	20 inches
 - Flanged rectangular feed chamber inlet sizes (inside dimensions) are as follows:

1015XX	16 ¹ / ₂ " x 29 ³ / ₈ "
1015YY	20" x 35 ³ / ₈ "
- The two individually driven drive shafts and seal components are 304 stainless steel.
- The Conditioning Auger/Agitator is flange-attached to its drive shaft.
- The Metering Auger utilizes a threaded attachment to its drive shaft.
- The Metering Auger is powered by a variable speed AC or DC gearmotor with a 10:1, 20:1, 30:1 or 50:1 speed range.
- The Conditioning Auger/Agitator is normally driven by a heavy-duty constant speed gearmotor.
- Motors are totally enclosed.
- Dust-tight, heavy-duty construction.
- Silent when operating.

Model 1015 Series of Volumetric Feeders



Model 1015YY

Optional and Accessory Equipment for the Model 1015 Series of Feeders

- Various materials of construction.
- The Models 1015, 1015X and 1015Z are available with integral supply hoppers up to eight cubic feet in capacity (depending upon the model and material flow characteristics).
- For the Models 1015XX and 1015YY, integral supply hoppers are available. Please contact Acrison.
- Various variable speed AC and DC motor controllers and control modes.
- Quick disconnect construction for ease of cleanout (certain models).
- Sanitary construction to comply with USDA and FDA codes and requirements (certain models). Includes quick disconnect construction.
- Threaded attachment for the Conditioning Auger/Agitator (certain models).
- High temperature construction.
- Pressure construction.

Capacities

The Capacity Charts indicate the typical output range for each standard size metering auger available with the specific Model 1015 Volumetric Feeder.

Since the physical properties of the actual product being metered often have an effect upon the exact output, the stated capacities could vary.

MODELS 1015, 1015X and 1015Z CAPACITY CHART (Capacities shown in cubic feet per hour)

Model Size	Minimum Output		Maximum Output
	30:1 Speed Range	50:1 Speed Range	
1015-A	0.002	0.0012	0.06
1015-B	0.005	0.003	0.15
1015-BC	0.0127	0.0076	0.38
1015-BB	0.018	0.0108	0.54
1015-C	0.03	0.018	0.9
1015-CC	0.047	0.028	1.4
1015-D	0.08	0.048	2.4
1015-DD	0.14	0.084	4.2
1015-E	0.2	0.12	6
1015-EE	0.29	0.174	8.7
1015-EF	0.38	0.22	11.4
1015-F	0.47	0.28	14
1015-FF	0.63	0.38	19
* 1015-G	0.97	0.58	29
* 1015-GG	1.4	0.84	42
** 1015-H	1.7	1.02	51
** 1015-HH	2.4	1.4	72
** 1015-K	3.2	1.9	96
** 1015-KK	3.9	2.4	118
** 1015-M	5.3	3.2	160
** 1015-N	6.7	4.0	202

* Available on the Models 1015X and 1015Z only.

** Available on the Model 1015Z only.

MODELS 1015XX and 1015YY CAPACITY CHART (Capacities shown in cubic feet per hour)

Model Size	Minimum Output		Maximum Output
	30:1 Speed Range	50:1 Speed Range	
1015XX-NN	8	4.8240	240
1015XX-P	11	6.4320	320
1015XX-R	20	12	600
1015XX-S	30	18	900
1015XX-T	40	24	1200
1015YY-U	60	36	1800
1015YY-V	80	48	2400
1015YY-W	113.3	68	3400

Discover the difference!

We cordially invite you to witness a test in Acrison's state-of-the-art Customer Demonstration Facilities handling your actual product(s) with the specific equipment we recommend for the application. Usually, there is no cost or obligation for this service.

Discover the difference in technology, quality and performance of Acrison equipment.



Empire Boulevard Facility
Moonachie, NJ USA

Acrison products...

- Models 101 and 130 Volumetric Feeder Series
- Models V-101 and V-130 Volumetric Feeders
- Model 101S Volumetric Feeder Series
- Model 105 Volumetric Feeder Series
- Model W-105 Volumetric Feeder Series
- Model 120 Volumetric Feeder
- Model 140 Volumetric Feeder Series
- Model 170 Volumetric Feeder Series
- Model 905-14 Volumetric Feeder
- Bin Discharger Feeders
- Model 200 Weigh Belt Feeder Series
- Model 203B Weigh Auger Feeder Series
- Model 270 In-Line Weigh Feeder Series
- Models 402, 404, 405, 406, 407X, 408 and 410 ("Weight-Loss-Differential") Weigh Feeders
- Model Series 403 ("Weight-Loss-Differential") Weigh Feeders
- Model 403B(D) Batch/Dump Weighing Systems
- Model 404BZ(BU) Bulk Bag Unloader Batch Weigher
- Models 350 and 301 Continuous Blenders and Blending Systems
- Multiple Auger Bin Dischargers and Multiple Auger Bin Discharger Hoppering Systems
- Vibratory Bin Discharger Hoppering Systems
- Model 170-BD-30 Bin Discharger
- Models 810 and 820 Bulk Bag Unloaders
- Models 500, 515, 530, and 580 Polyelectrolyte Preparation Systems
- Water and Waste Water Treatment Systems
- Volumetric and Gravimetric Feeder Controllers and Control Systems
- Silo Systems
- Accessory Equipment for Acrison Products
- Systems Engineering



Joseph Street Facility
Moonachie, NJ USA

"Visibly Different... Measurably Better"

Acrison[®], Inc.

20 Empire Blvd., Moonachie, NJ 07074

201-440-8300 • Fax: 201-440-4939

Toll Free: 800-4ACRISON

Email: informail@acrison.com

www.acrison.com